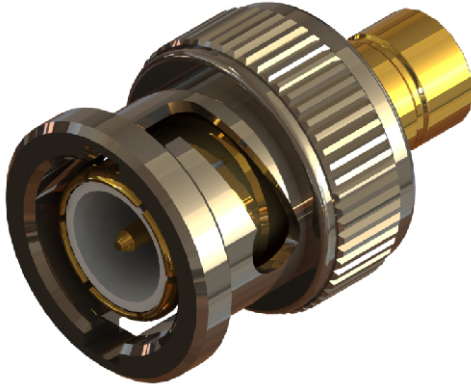
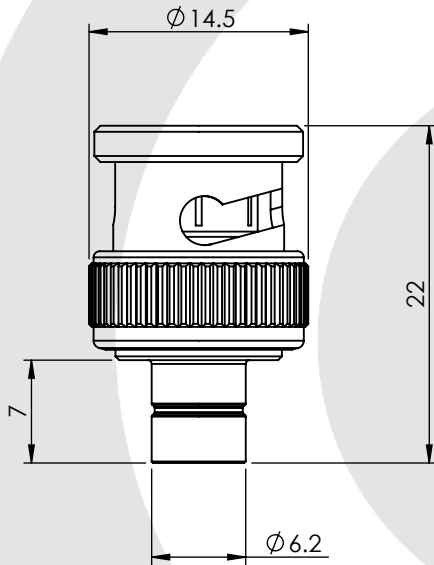


76A ADAPTOR 43-76A



images for illustration purposes only



Environmental Specification

Operating Temp: -40 to +100 Deg C

IP Rating (Mated): NONE

Electrical Specification

Impedance: 75 Ohm

Frequency: 0 - 1.5 GHz

Dielectric W/V: 1500 Veff

Insulation res: 500 M-Ohm

Mechanical Specification

Contact Retention: 10 N min

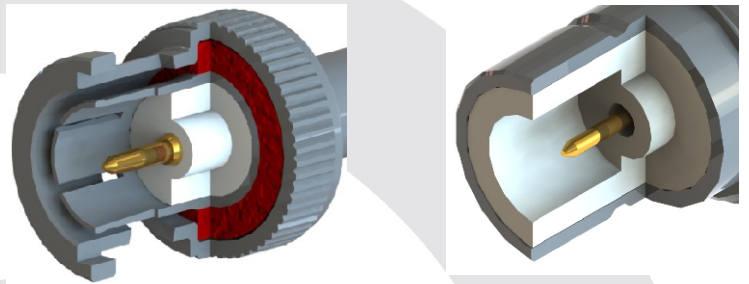
Cable Retention: N/A N min

Mating cycles: 100

Weight: 9.74 g

Connector Interface

image for illustration purposes only



8	WASHER	BRASS	NICKEL
7	WASHER	POSPHOR BRONZE	N/A
6	SPRING	BERYLLIUM COPPER	N/A
5	GASKET	SILICONE RUBBER	N/A
4	BODY	BRASS	GOLD
3	INSULATOR	PTFE	N/A
2	CENTRE CONTACT	BRASS	GOLD
1	BAYONET CAP	BRASS	NICKEL
ITEM	DESCRIPTION	MATERIAL	PLATING

A4 SHEET 1 OF 1



DIMENSIONS ARE IN MILLIMETRES

REVISION : A00

NAME	SIGNATURE	DATE
DRAWN	GE	15/07/2005
CHK'D	SJ	22/07/2005
APPV'D		

ISSUE : 2

6-8 COLNE ROAD,
TWICKENHAM,
MIDDLESEX.
TW1 4JR

THE INFORMATION IS GIVEN AS AN INDICATION ONLY AND IS SUBJECT TO CHANGE WITHOUT NOTICE. IN THE CONTINUAL GOAL TO IMPROVE OUR PRODUCTS, WE RESERVE THE RIGHT TO MAKE ANY MODIFICATIONS NECESSARY WITHOUT PRIOR NOTICE.